



## 4. BELTS

### Articulated Belt

#### POWERTWIST WITH REMOVABLE LINKS



#### Link belts:

These trapezoidal belts are made of removable superior POLYURETHANE links. They are easy to assemble on transmissions with fixed distance of centres.

Tension and wearing are avoided by simply eliminating one or more links.

Tension can adjusted of 4% for the 10, 13 and 17 mm lengths and of 5% for 22 mm.

The original packaging is 10 m but it can also be sent with other length.

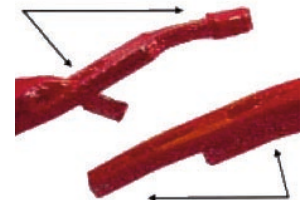
Ref.	Ø <sub>belt</sub>	Group	PRICE / M
01731	10	Z	49.50
01732	13	A	52.00
01733	17	B	57.00
01734	22	C	78.00
01754	Ø 8mm For Machine T4 T4 M4 Replaces black veelos 00 : 8 m		48.00

#### Measuring method:

Install the belt on the pulleys and control the length by stacking the two tongues on the two holes.

Cut the number of links and take off one every 24 for the sections O/3L, A/4L and B/5L or one every 20 for the sections C and D.

Note: Every 10th link is indicated with an arrow. For the drives with multiple belts, the belts must have the same link number.



#### Uninstalling:



#### Installing:



Conditions of sale: Discount : 5 % from 40 m of identical item.  
10 % from 60 m of identical item.  
15 % from 80 m of identical item.  
20 % from 100 m of identical item.



For the assembling, the Plier DIXLINK (Ref. 01735, Fr. 17.00) are advised. The tension can be adjusted how it follows:

- The belt is put together on the drive and is then dismantled.
- Its length is reduced of 8% (1 link every 12) for the widths from 10 to 17 mm and of 5% for the widths from 22 mm.
- The shortened belt is then reassembled in order to obtain the optimal tension.

The original packaging is 20 m but it can also be sent with other length.

Ref.	Width	Group	PRICE / M
01744	15	---	43.00
01746	22	C	75.70

The combination of high strength and low elongation under load simply cannot be beaten. Because they're made of a custom-designed, high-tech polyurethane/polyester composite, PowerTwist Plus V-belts won't fail you when others may. The result? Less downtime. Higher productivity. Reduced maintenance costs.

PowerTwist Plus V-Belts have the same cross section dimensions as conventional endless V-belts and can be installed on existing pulleys with no changes in set-up.

Single or matched V-belt sets can be made with a flick of the wrist! PowerTwist Plus V-Belts can be made up to required length by hand in seconds and rolled onto the drive just like a bicycle chain. Their custom multi-ply composite construction prevents roll-on damage. If conventional rubber V-belts are installed this way, almost certainly some of the load-bearing tension cords will be broken, leading to significantly reduced belt life.

If your V-belt drives are operating in hostile, nasty environments, you've got to take advantage of the high performance properties of polyurethanes. That's why we use a high performance polyurethane elastomer reinforced with multiple plies of polyester fabric for PowerTwist Plus. This custom material provides PowerTwist Plus with significantly superior resistance to oils, grease, water, most common industrial/agricultural chemicals and solvents. Plus an operating temperature range, with no loss of performance, of -40° F to +240° F.

Conventional SBR/chloroprene brand V-belts simply can't compete. Reduce transmitted vibration.

### Trapezoidal articulated Belt

#### VEELOS SUPER POLYESTER

The VEELOS Super Polyester trapezoidal articulated belt, long-lasting and robust, for the driving force transmission under extreme solicitation conditions. It is made up of a cloth soaked in neoprene, having the resistance to flexion and traction needed for an excellent output in service. This belt has an exceptional solidity to every trial and it transmits up to 50% more force with a lengthening up to 30 % inferior to the ordinary articulated trapezoidal belts.

It is manufactured with an exclusive rotary polymerization process that thoroughly soaks the polyester cloth. Its entirely synthetic construction permits to the VEELOS Super Polyester belt resisting to the attack of many different industrial oils, greases and lubricants. Its resistance to ozone and oxygen is excellent. Even after a long exposition to high humidity or an immersion into water, the polyester cloth does not deteriorate or go mouldy and its resistance to traction remains very high.

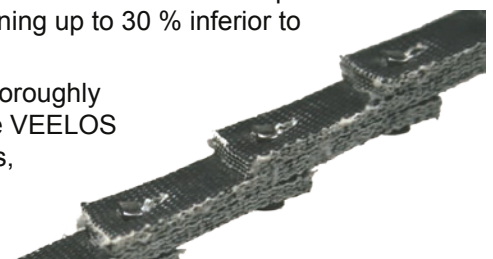
Like all the VEELOS trapezoidal articulated belts, the super polyester model is made of even links that do not generate nor transmit any vibration.

Ref.	Width	Length	Group	PRICE / M
01756	10	10 m	0	62.00
01757	13		A	63.00

**Conditions of sale: Discount :** 5 % from 40 m of identical item.  
10 % from 60 m of identical item.  
15 % from 80 m of identical item.  
20 % from 100 m of identical item.

### Trapezoidal articulated Belt

#### V-LINK MAXI RED





## Articulated belt NU-T-Link / Super-t-Link

NuTlink (V section) belts and SuperTLink (SP section) belts offer the V or SP performance with a longer life-lasting. These trapezoidal belts with removable links made of polyester/polyuretane, are up to 20 times more resistant, even in the more demanding conditions.

- Excellent high resistance to high temperatures (-40 to 100°C)
- Excellent high resistance to abrasive substances.
- High resistance to water, steam, oil, and to most of the industrial chemicals.

The removable elements conception makes the installation easier and more rapid, even on the less easily accessible mechanisms. The belts can be installed by simply assembling the links without the dismantling of the mechanism.

The removable links system permits the reduction of stocks, as the belts can be adjusted in situ to the desired length, by adding or removing links.

The servicing is unnecessary because the initially adjusted tension does not change.

The links belt conception permits the reduction of 50% of the vibrations and the functioning noise.

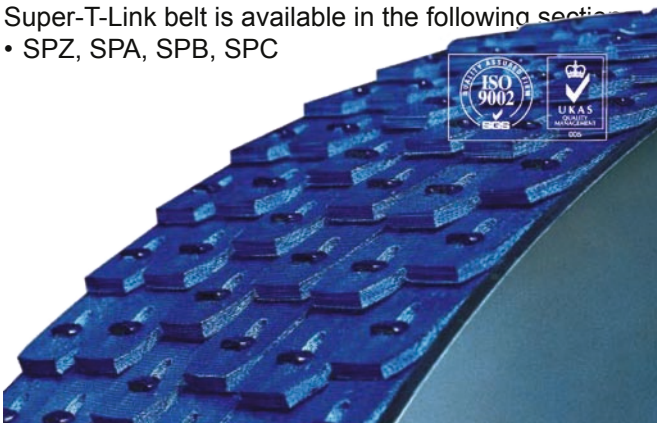
The original packaging is 20 m but it can also be sent with other length.

Nu-T-Link belt is available in every standard section of the sector:

- Z/10, A/13, B/17, C/22, S/25, D/32, E/40, F/50

Super-T-Link belt is available in the following sections:

- SPZ, SPA, SPB, SPC



### SUPER-T-LINK

Ref.	Ø <sub>belt</sub>	Group	PRICE
02190	10	SP Z	153.00
02191	13	SPA	153.00

Tension is adjusted how it follows with the included tool:

- The belt is put together on the carrying and then dismantled.
- Its length is reduced of 9% (1 link every 11) for the lengths from 10 to 17 mm and of 5% for the lengths from 22 mm.
- The shortened belt is then reassembled in order to obtain an optimal tension.

Prices are meant for a length of 20 m.

### NU-T-LINK



Ref.	Ø <sub>belt</sub>	Group	PRICE
01736	10	Z	64.00
01737	13	A	73.00
01738	17	B	76.00
01739	22	C	94.00
01740	25		138.00
01741	32	D	214.00

Conditions of sale: Discount : 5 % from 40 m of identical item.  
10 % from 60 m of identical item.  
15 % from 80 m of identical item.  
20 % from 100 m of identical item.



## Round Belt

### QUICK-GO POLYURETANE

QUICK-GO belts differ from usual round belts by the patented system that permits to produce endless belt by means of a metallic joint that can be placed in a few seconds and that does not need any special device. The use of the cutting Plier QUICK-GO is recommended for the assembling (Ref. 01770, Fr. 24.00).

The original packaging is 30 m but it can also be sent with other length.



Belts			
Ref.	Ø <sub>belt</sub>	Ø <sub>pulley</sub>	PRICE
01771	5	40	6.90
01772	6	50	8.15
01773	8	65	11.05
01774	10	80	13.50

Joints			
Ref.	Ø <sub>belt</sub>	Ø <sub>pulley</sub>	PRICE
01776	5	40	1.85
01777	6	50	0.90
01778	8	65	0.90
01779	10	80	0.90
01780	13	100	0.90

### Maximal transferable power (HP) according to the belt diameter

Speed (m/s)	Pulley 40 mm	Pulley 50 mm	Pulley 65 mm	Pulley 80 mm	Pulley 100 mm
0.5	0.02	0.03	0.04	0.05	0.08
2.5	0.07	0.14	0.23	0.27	0.40
5.0	0.15	0.30	0.45	0.54	0.80
7.5	0.23	0.45	0.69	0.81	1.20
10.0	0.30	0.60	0.90	1.08	1.60
12.5	0.38	0.75	1.14	1.35	2.20
15.0	0.45	0.90	1.35	1.62	3.10

Conditions of sale: Discount: 10 % from 30 m of identical item.  
10 % from 25 identical joints.



# Schurch Asco SA



*Partenaire et Savoir-faire*

AV. DU 1ER MARS 33, CP 3052  
CH-2001 NEUCHÂTEL  
SWITZERLAND

PHONE : +41 32 724 3434  
FAX : +41 32 724 3436  
EMAIL : [INFO@SCHURCH-ASCO.COM](mailto:INFO@SCHURCH-ASCO.COM)  
WEB : [WWW.SCHURCH-ASCO.COM](http://WWW.SCHURCH-ASCO.COM)



## Elastic round endless string Belt

ASCO-CORDEX

red

Use examples:

Textile machines, tool machines Schaublin 102, Ewag, Technica, etc. These belts are specially recommended for use on the high-speed or hard pull machines.

Must be indicated: the string length equivalent to the working tightened length. In any case it is a matter of the length of a string embracing the pulleys. Because of their elasticity, the belts are delivered in free length that is inferior from 10 to 12 % to the working length.

Length	Ø = 3		Ø = 4		Ø = 5	
	Ref.	PRICE	Ref.	PRICE	Ref.	PRICE
250 - 499	<b>01855</b>	10.70	<b>01878</b>	11.25	<b>01912</b>	12.00
500 - 799	<b>01856</b>	11.00	<b>01879</b>	11.45	<b>01913</b>	12.35
800 - 999	<b>01857</b>	9.80	<b>01880</b>	10.25	<b>01914</b>	10.45
1000 - 1099	<b>01858</b>	8.40	<b>01881</b>	8.60	<b>01915</b>	11.00
1100 - 1199	<b>01859</b>	9.15	<b>01882</b>	9.50	<b>01916</b>	12.00
1200 - 1299	<b>01860</b>	9.90	<b>01883</b>	11.15	<b>01917</b>	13.00
1300 - 1399	<b>01861</b>	10.70	<b>01884</b>	12.00	<b>01918</b>	13.90
1400 - 1499	<b>01862</b>	11.45	<b>01885</b>	12.80	<b>01919</b>	15.00
1500 - 1599	<b>01863</b>	12.25	<b>01886</b>	13.65	<b>01920</b>	15.95
1600 - 1699	<b>01864</b>	13.00	<b>01887</b>	14.55	<b>01921</b>	16.95
1700 - 1799	<b>01865</b>	13.65	<b>01888</b>	15.30	<b>01922</b>	17.95
1800 - 1899	<b>01866</b>	14.45	<b>01889</b>	16.20	<b>01923</b>	18.95
1900 - 1999	<b>01867</b>	16.20	<b>01890</b>	17.05	<b>01924</b>	19.95
2000 - 2099	<b>01868</b>	15.95	<b>01891</b>	17.85	<b>01925</b>	20.80
2100 - 2199	<b>01869</b>	16.85	<b>01892</b>	18.70	<b>01926</b>	21.90
2200 - 2299	<b>01870</b>	17.40	<b>01893</b>	19.60	<b>01927</b>	22.90
2300 - 2399	<b>01871</b>	18.30	<b>01894</b>	20.35	<b>01928</b>	23.90
2400 - 2499	<b>01872</b>	19.05	<b>01895</b>	21.25	<b>01929</b>	24.90
2500 - 2599	<b>01873</b>	19.70	<b>01896</b>	22.00	<b>01930</b>	25.85
2600 - 2699	<b>01874</b>	20.50	<b>01897</b>	23.00	<b>01931</b>	26.85
2700 - 2799	<b>01875</b>	21.35	<b>01898</b>	23.90	<b>01932</b>	27.75
2800 - 2899	<b>01876</b>	22.00	<b>01899</b>	24.65	<b>01933</b>	28.85
2900 - 2999	<b>01877</b>	22.80	<b>01900</b>	25.45	<b>01934</b>	29.85
3000 - 3099			<b>01901</b>	26.40	<b>01935</b>	30.80
3100 - 3199			<b>01902</b>	27.20	<b>01936</b>	31.80
3200 - 3299			<b>01903</b>	28.05	<b>01937</b>	32.80
3300 - 3399			<b>01904</b>	28.95	<b>01938</b>	33.80
3400 - 3499			<b>01905</b>	29.70	<b>01939</b>	34.65
3500 - 3599			<b>01906</b>	30.70	<b>01940</b>	35.75
3600 - 3699			<b>01907</b>	31.50	<b>01941</b>	36.75
3700 - 3799			<b>01908</b>	32.25	<b>01942</b>	37.75
3800 - 3899			<b>01909</b>	33.25	<b>01943</b>	38.75
3900 - 3999			<b>01910</b>	34.00	<b>01944</b>	39.75
4000 - 4099			<b>01911</b>	34.90	<b>01945</b>	40.70
4100 - 4499					<b>01946</b>	44.70

*Prices on request*



## Elastic round endless string Belt

### ASCO-CORDEX



**Must be indicated:** the string length equivalent to the working tightened length. In any case it is a matter of the length of a string embracing the pulleys. Because of their elasticity, the belts are delivered in free length that is inferior from 10 to 12 % to the working length

Length	Ø = 6		Ø = 8		Ø = 10	
	Ref.	PRICE	Ref.	PRICE	Ref.	PRICE
250 - 499	01947	13.00	01981	24.35		
500 - 799	01948	18.00	01982	24.65		
800 - 999	01949	14.20	01983	24.90	02014	39.05
1000 - 1099	01950	15.65	01984	27.40	02015	42.80
1100 - 1199	01951	24.55	01985	29.85	02016	46.90
1200 - 1299	01952	18.50	01986	32.35	02017	50.75
1300 - 1399	01953	19.95	01987	34.90	02018	54.70
1400 - 1499	01954	21.35	01988	37.40	02019	58.65
1500 - 1599	01955	22.70	01989	39.85	02020	62.40
1600 - 1699	01956	24.10	01990	42.35	02021	66.35
1700 - 1799	01957	25.45	01991	44.90	02022	70.30
1800 - 1899	01958	26.95	01992	47.30	02023	73.95
1900 - 1999	01959	28.40	01993	49.75	02024	78.00
2000 - 2099	01960	29.70	01994	52.05	02025	81.95
2100 - 2199	01961	31.25	01995	54.80	02026	85.95
2200 - 2299	01962	32.70	01996	57.20	02027	89.80
2300 - 2399	01963	34.00	01997	59.75	02028	93.65
2400 - 2499	01964	35.45	01998	62.30	02029	97.60
2500 - 2599	01965	36.85	01999	64.70	02030	101.45
2600 - 2699	01966	38.20	02000	67.00	02031	105.20
2700 - 2799	01967	39.75	02001	69.75	02032	109.25
2800 - 2899	01968	41.15	02002	72.30	02033	113.10
2900 - 2999	01969	42.60	02003	74.70	02034	117.05
3000 - 3099	01970	43.90	02004	77.25	02035	121.00
3100 - 3199	01971	45.35	02005	79.75	02036	124.75
3200 - 3299	01972	46.75	02006	82.10	02037	128.30
3300 - 3399	01973	48.20	02007	84.70	02038	132.90
3400 - 3499	01974	49.65	02008	87.15	02039	136.30
3500 - 3599	01975	50.85	02009	90.10	02040	139.85
3600 - 3699	01976	52.50	02010	92.10	02041	144.45
3700 - 3799	01977	53.90	02011	94.60	02042	147.85
3800 - 3899	01978	55.25	02012	97.05	02043	152.50
3900 - 3999	01979	56.65	02013	99.35	02044	156.00
4000 - 4099				prices on request		
4100 - 4499	01980	63.60				

**Conditions of sale:** Discount: 10 % from 25 identical pieces or more.  
15 % from 50 identical pieces or more.  
20 % from 100 identical pieces or more.  
25 % from 200 identical pieces or more.  
30 % from 300 identical pieces or more.



# Schurch Asco SA



*Partenaire et Savoir-faire*

AV. DU 1ER MARS 33, CP 3052  
CH-2001 NEUCHÂTEL  
SWITZERLAND

PHONE : +41 32 724 3434

FAX : +41 32 724 3436

EMAIL : INFO@SCHURCH-ASCO.COM

WEB : WWW.SCHURCH-ASCO.COM

## Rigid round endless string Belt

ASCO-STAR

yellow



Use examples:

Textile machines, tool-machines Schaublin 102, Ewag, Posalux, Technica, etc. These belts are very resistant to use and are specially recommended on the high-speed machines.

**Must be indicated:** the string length equivalent to the working tightened length

Length	Ø = 3		Ø = 4		Ø = 5	
	Ref.	PRICE	Ref.	PRICE	Ref.	PRICE
1000 - 1099	02050		02074		02098	13.45
1100 - 1199	02051		02075		02099	
1200 - 1299	02052		02076		02100	
1300 - 1399	02053		02077		02101	
1400 - 1499	02054		02078		02102	15.85
1500 - 1599	02055		02079		02103	
1600 - 1699	02056		02080	15.10	02104	
1700 - 1799	02057		02081	43.40	02105	
1800 - 1899	02058		02082		02106	34.00
1900 - 1999	02059		02083		02107	
2000 - 2099	02060		02084		02108	
2100 - 2199	02061	<i>Prices on request</i>	02085		02109	
2200 - 2299	02062		02086		02110	
2300 - 2399	02063		02087		02111	
2400 - 2499	02064		02088		02112	
2500 - 2599	02065		02089		02113	
2600 - 2699	02066		02090		02114	
2700 - 2799	02067		02091		02115	
2800 - 2899	02068		02092		02116	
2900 - 2999	02069		02093		02117	
3000 - 3199	02070			02094	26.00	02118
3200 - 3499	02071		02095	20.45	02119	35.00
3500 - 3999	02072		02096		02120	33.00
4000 - 4499	02073		02097	24.55	02121	35.40

Conditions of sale : Discount:

10 % from 25 identical pieces or more.

15 % from 50 identical pieces or more.

20 % from 100 identical pieces or more.



## Rigid round endless string Belt

ASCO-STAR

yellow



Use examples:

Textile machines, tool-machines Schaublin 102, Ewag, Posalux, Technica, etc. These belts are very resistant to use and are specially recommended on the high-speed machines.

**Must be indicated:** the string length equivalent to the working tightened length.

Length	Ø = 6		Ø = 7		Ø = 8		
	Ref.	PRICE	Ref.	PRICE	Ref.	PRICE	
1000 - 1099	02122	15.65	02146		02167		
1100 - 1199	02123	<i>Prices on request</i>	02147		02168		
1200 - 1299	02124		02148		02169		
1300 - 1399	02125		02149		02170		
1400 - 1499	02126		02150		02171		
1500 - 1599	02127		02151		02172		
1600 - 1699	02128	<i>Prices on request</i>	02152		02173		
1700 - 1799	02129		02153		02174		
1800 - 1899	02130		41.00	02154		02175	
1900 - 1999	02131			02155		02176	
2000 - 2099	02132			02156		02177	
2100 - 2199	02133	14.90	02157		02178		
2200 - 2299	02134	15.70	02158		02179		
2300 - 2399	02135	<i>Prices on request</i>	02159		02180		
2400 - 2499	02136		02160		02181		
2500 - 2599	02137		02161		02182		
2600 - 2699	02138		02162		02183		
2700 - 2799	02139		02163		02184		
2800 - 2899	02140	<i>Prices on request</i>	02164		02185		
2900 - 2999	02141		02165		02186		
3000 - 3199	02142			02166		02187	
3200 - 3499	02143						
3500 - 3999	02144						
4000 - 4499	02145						

Conditions of sale : Discount:

10 % from 25 identical pieces or more.

15 % from 50 identical pieces or more.

20 % from 100 identical pieces or more.





# Schurch Asco SA

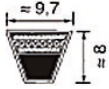


Partenaire et Savoir-faire

AV. DU 1ER MARS 33, CP 3052  
CH-2001 NEUCHÂTEL  
SWITZERLAND

PHONE : +41 32 724 3434  
FAX : +41 32 724 3436  
EMAIL : INFO@SCHURCH-ASCO.COM  
WEB : WWW.SCHURCH-ASCO.COM

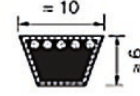
Narrow section V-belts Optibelt RED-POWER 3 S=C Plus SPZ  
Optibelt Super XE-POWER PRO M=S narrow section V-belts  
VB S=C Plus classic section belts



RED-POWER 3 S=C Plus SPZ



SUPER XE-POWER Pro M=S



CLASSIQUE VB S=C Plus

SECTIONS AND NOMINAL DIMENSIONS SP				
Ref.	Section	Width	Height	Length Range
17000	SPZ/3V	9.7	8	1202-3550
17001	SPA	12.7	10	1207-4000
17002	SPB/5V	16.3	13	1250-8000
17003	SPC	22	18	2000-10000

XP NOMINAL SECTIONS AND DIMENSIONS				
Ref.	Section	Width	Height	Length Range
17004	XPZ/3VX	9.7	8	587-3550
17005	XPA	12.7	10	707-3550
17006	XPB/5VX	16.3	13	1250-3550
17007	XPC	22.00	18	2000-3550

SECTIONS AND NOMINAL DIMENSIONS VB				
Ref.	Section	Width	Height	Length Range
17008	Z	10	6	290-2500
17009	A	13	8	407-5000
17010	B	17	11	570-7620
17011	C	22	14	1090-9144

**TYPE V-BELTS 3S = C PLUS**

SECTION SPZ		SECTION SPA		
Ref.	17000	Ref.	17001	
Reference length (mm)		Reference length (mm)		
01202	01800	01207	01800	02607
01212	01837	01232	01807	02632
01237	01862	01250	01832	02650
01250	01887	01257	01857	02682
01262	01900	01272	01882	02732
01287	01937	01282	01900	02782
01312	01987	01307	01907	02800
01320	02000	01320	01932	02832
01337	02037	01332	01957	02847
01362	02120	01357	01982	02882
01387	02137	01382	02000	02932
01400	02187	01400	02032	02982
01412	02240	01407	02057	03000
01437	02287	01432	02082	03032
01462	02360	01457	02120	03082
01487	02500	01482	02132	03150
01500	02650	01500	02182	03182
01512	02800	01507	02207	03282
01537	03000	01532	02232	03350
01562	03150	01557	02240	03382
01587	03350	01582	02282	03550
01600	03550	01600	02300	03750
01612		01607	02307	04000
01637		01632	02332	
01662		01657	02360	
01687		01682	02382	
01700		01700	02432	
01737		01707	02482	
01762		01732	02500	
01787		01757	02532	
		01782	02582	

SECTION SPB		SECTION SPC	
Ref.	17002	Ref.	17003
Reference length (mm)		Reference length (mm)	
01250	03450	02000	
01320	03550	02120	
01400	03650	02240	
01450	03750	02360	
01500	03800	02500	
01550	04000	02650	
01600	04120	02800	
01700	04250	03000	
01800	04500	03150	
01850	04750	03350	
01900	05000	03550	
02000	05300	03750	
02020	05600	04000	
02060	06000	04250	
02120	06300	04500	
02150	06700	04750	
02180	07100	05000	
02240	07500	05300	
02280	08000	05600	
02360		06000	
02450		06300	
02500		06700	
02530		07100	
02650		07500	
02800		08000	
02840		08500	
02900	Complete PDF Catalog + PDF PRICE	09000	
03000		09500	
03150		10000	
03250			
03350			

Conditions of sale: PDF price attached. Deadlines on request, discount 5 pcs 10% - 10 pcs 20%.



## TYPE XP V-BELTS XE POWER PRO M=S

SECTION XPZ / 3VX			SECTION XPA			SECTION XPB / 5VX		Section XPC	
Ref.	17004		Ref.	17005		Ref.	17006	Ref.	17007
Reference length (mm)			Reference length (mm)			Reference length (mm)		Reference length (mm)	
00587	01112	01900	00707	01357	02650	01250		02000	
00612	01120	01950	00732	01382	02800	01320		02120	
00630	01137	02000	00757	01400	03000	01350		02240	
00637	01162	02120	00782	01432	03150	01400		02360	
00662	01180	02150	00800	01450	03350	01450		02500	
00670	01187	02240	00807	01457	03550	01500		02650	
00687	01202	02360	00832	01482		01550		02800	
00710	01212	02500	00850	01500		01600		03000	
00730	01237	02540	00857	01507		01650		03150	
00737	01250	02650	00882	01532		01700		03350	
00750	01262	02690	00900	01557		01750		03550	
00762	01287	02800	00907	01582		01800			
00772	01312	02840	00932	01600		01850			
00787	01320	03000	00950	01607		01900			
00800	01337	03150	00957	01632		02000			
00812	01362	03350	00982	01650		02020			
00825	01387	03550	01000	01682		02040			
00837	01400		01007	01700		02120			
00850	01412		01030	01732		02150			
00862	01437		01060	01750		02240			
00875	01462		01082	01757		02280			
00887	01487		01107	01782		02360			
00900	01500		01120	01800		02400			
00912	01512		01132	01832		02500			
00925	01537		01157	01850		02650			
00937	01562		01180	01882		02680			
00950	01587		01207	01900		02800			
00962	01600		01232	01932		02840			
00987	01612		01250	01950		03000			
01000	01662		01257	01982		03150			
01012	01700		01272	02000		03350			
01037	01750		01282	02120		03550			
01060	01762		01307	02240					
01077	01800		01320	02360					
01087	01850		01332	02500					
							<b>Complete PDF Catalog + PDF PRICE</b>		

## VB TYPE V-BELTS

CLASSIC VB / Z		CLASSIC VB / A		CLASSIC VB / B		CLASSIC VB / C	
Ref.	Reference length (mm)	Ref.	Reference length (mm)	Ref.	Reference length (mm)	Ref.	Reference length (mm)
<b>17008</b>	290-2500	<b>17009</b>	407-5000	<b>17010</b>	570-7620	<b>17011</b>	1090-9144

Conditions of sale: PDF price attached. Deadlines on request, discount 5 pcs 10% - 10 pcs 20%.



# Schurch Asco SA



*Partenaire et Savoir-faire*

AV. DU 1ER MARS 33, CP 3052  
CH-2001 NEUCHÂTEL  
SWITZERLAND

PHONE : +41 32 724 3434

FAX : +41 32 724 3436

EMAIL : [INFO@SCHURCH-ASCO.COM](mailto:INFO@SCHURCH-ASCO.COM)

WEB : [WWW.SCHURCH-ASCO.COM](http://WWW.SCHURCH-ASCO.COM)



## Round Belt

### POLYCORD

POLYURETHANE, GREEN

Thanks to a high flexibility, these round Polycord belts allow unlimited direction changes. Thanks to their high elasticity, the round Polycord belts operate as security elements by reducing the backlash and the overloads and by increasing their lasting.

Expensive intermediary elements can be then suppressed. Physical and chemical characteristics are exceptional in many fields: resistance to hydrolysis, for example, is slightly higher than in most of the known elastomers-polyurethanes. Moreover, the non antistatic round Polycord belts are water-, oil-, grease-, and benzene-proof. Round Polycord belts assure, thanks to their tight tolerance of diameters, many regular turns.

The original packaging is 30 m but it can also be sent with other length.

#### Use:

Mechanical construction of machines and devices, precision mechanics and horology, reaming machines, oil pumps, pantographs, accessories for automatic lathes, textile industry, etc.

Ref.	Ø <sub>belt</sub>	PRICE
01810	2	2.25
01811	3	3.35
01812	4	4.40
01813	5	6.35
01814	6	9.40

Ref.	Ø <sub>belt</sub>	PRICE
01815	7	9.60
01816	8	12.00
01817	10	19.00
01818	12	20.45
01819	15	29.50

Conditions of sale: Discount: 10 % from 120 m of identical item.  
Discount: 5 % from 60 m of identical item.

## Hooking spray

### BARDAHL



WEICON Transmission Belt Spray is a transparent coating based on synthetic elastomers for highly stressed transmission belts of all kinds.

It increases the life of belts, prolongs the life of machines and installations, prevents belt slippage, transmits full drive power, eliminates and prevents squeaking, etc.

WEICON Transmission Belt Spray is suitable for all types of belts and tapes in common materials, eg. ex. in fabric, leather, rubber or PVC.

Ref.	Designation	Quantity	Price
00799	WEICON	400 ml	23.00

Conditions of sale: Discount : 10% from 10 pieces



## Round Belt

### CLEAR-GO SUPREME

*round, polyuretane*

Round belt with rough surface.

This belt can be soldered with the help of a soldering machine in order to obtain an endless belt.

The original packaging is 30 m but it can also be sent with other length.



Ref.	Ø <sub>belt</sub>	Price
01760	2	2.20
01761	3	2.95
01762	4	3.00
01763	5	4.40
01764	6	6.85
01765	7	6.85
01766	8	8.45
01767	10	11.35
01768	12	14.10

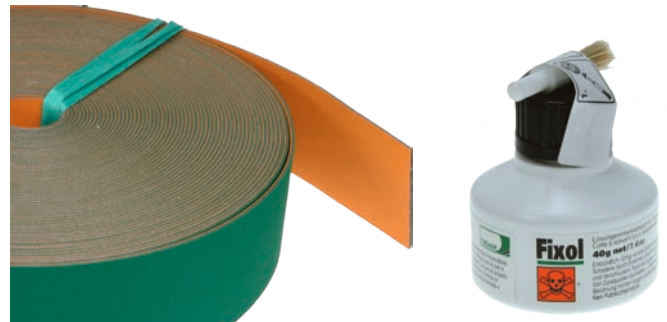
Conditions of sale: Discount: 10 % from 120 m of identical item.  
5 % from 60 m of identical item.

## Flat Belt

### ASCO-VIS

*Synthetic, extra flexible*

The original packaging is 30 m but it can also be sent with other length.



Ref.	Designation	Quantity	Price
01809	Flacon de colle FIXOL	40 g	19.00

Width	Deliverable from stock except sale C 10 SX, Thickness 1,4		3 weeks delay D 20 SX, Thickness 2,2	
	Ref.	Price	Ref.	Price
5	01785	5.60	01797	7.40
7	01786	5.85	01798	7.70
10	01787	7.00	01799	7.90
15	01788	8.80	01800	10.55
20	01789	12.80	01801	14.15
25	01790	14.00	01802	17.60
30	01791	16.35	01803	21.20
35	01792	19.50	01804	24.80
40	01793	25.65	01805	28.00
45	01794	26.40	01806	31.35
50	01795	28.00	01807	35.20
60	01796	33.00	01808	41.80



# Schurch Asco SA



*Partenaire et Savoir-faire*

AV. DU 1ER MARS 33, CP 3052  
CH-2001 NEUCHÂTEL  
SWITZERLAND

PHONE : +41 32 724 3434

FAX : +41 32 724 3436

EMAIL : [INFO@SCHURCH-ASCO.COM](mailto:INFO@SCHURCH-ASCO.COM)

WEB : [WWW.SCHURCH-ASCO.COM](http://WWW.SCHURCH-ASCO.COM)

## Flat endless Belt

## POWERBAND

*High capacity, synthetic, blue*

*Thickness 2 mm*

Conditions of sale: Net prices



Length	Width = 5		Width = 10		Width = 15	
	Ref.	PRICE	Ref.	PRICE	Ref.	PRICE
800 - 899	<b>08903</b>	21.15	<b>08928</b>	27.65	<b>08953</b>	32.70
900 - 999	<b>08904</b>	21.70	<b>08929</b>	28.65	<b>08954</b>	34.35
1000 - 1099	<b>08905</b>	23.25	<b>08930</b>	30.15	<b>08955</b>	36.25
1100 - 1199	<b>08906</b>	24.20	<b>08931</b>	31.90	<b>08956</b>	38.30
1200 - 1299	<b>08907</b>	25.30	<b>08932</b>	33.65	<b>08957</b>	40.00
1300 - 1399	<b>08908</b>	27.10	<b>08933</b>	34.75	<b>08958</b>	41.75
1400 - 1499	<b>08909</b>	27.85	<b>08934</b>	36.25	<b>08959</b>	43.60
1500 - 1599	<b>08910</b>	29.15	<b>08935</b>	38.30	<b>08960</b>	45.35
1600 - 1699	<b>08911</b>	29.95	<b>08936</b>	39.90	<b>08961</b>	47.15
1700 - 1799	<b>08912</b>	31.30	<b>08937</b>	41.25	<b>08962</b>	48.70
1800 - 1899	<b>08913</b>	33.20	<b>08938</b>	42.35	<b>08963</b>	50.40
1900 - 1999	<b>08914</b>	34.35	<b>08939</b>	43.50	<b>08964</b>	51.80
2000 - 2099	<b>08915</b>	35.30	<b>08940</b>	45.55	<b>08965</b>	53.15
2100 - 2199	<b>08916</b>	36.35	<b>08941</b>	47.25	<b>08966</b>	55.95
2200 - 2299	<b>08917</b>	37.75	<b>08942</b>	47.95	<b>08967</b>	56.40
2300 - 2399	<b>08918</b>	39.15	<b>08943</b>	49.65	<b>08968</b>	58.35
2400 - 2499	<b>08919</b>	40.00	<b>08944</b>	51.25	<b>08969</b>	60.00
2500 - 2599	<b>08920</b>	41.10	<b>08945</b>	52.80	<b>08970</b>	60.95
2600 - 2699	<b>08921</b>	42.25	<b>08946</b>	54.00	<b>08971</b>	63.40
2700 - 2799	<b>08922</b>	43.60	<b>08947</b>	56.00	<b>08972</b>	62.15
2800 - 2899	<b>08923</b>	44.85	<b>08948</b>	57.40	<b>08973</b>	66.35
2900 - 2999	<b>08924</b>	45.95	<b>08949</b>	58.70	<b>08974</b>	68.35



*Flat endless Belt  
synthetic, blue,  
thickness 2 mm*

**POWERBAND HIGH CAPACITY**



Length	Width = 20		Width = 25		Width = 30	
	Ref.	PRICE	Ref.	PRICE	Ref.	PRICE
800 - 899	08978	38.30	09003	42.90	09028	48.70
900 - 999	08979	40.00	09004	45.80	09029	51.80
1000 - 1099	08980	41.75	09005	47.95	09030	54.00
1100 - 1199	08981	44.40	09006	51.25	09031	56.40
1200 - 1299	08982	46.70	09007	53.30	09032	59.60
1300 - 1399	08983	48.65	09008	56.00	09033	62.35
1400 - 1499	08984	50.40	09009	57.85	09034	64.40
1500 - 1599	08985	52.80	09010	60.05	09035	67.25
1600 - 1699	08986	54.00	09011	63.15	09036	69.75
1700 - 1799	08987	56.00	09012	64.90	09037	72.40
1800 - 1899	08988	58.35	09013	66.80	09038	74.55
1900 - 1999	08989	60.05	09014	68.75	09039	77.05
2000 - 2099	08990	62.75	09015	71.45	09040	80.35
2100 - 2199	08991	63.85	09016	73.30	09041	82.45
2200 - 2299	08992	65.45	09017	74.85	09042	84.90
2300 - 2399	08993	68.35	09018	77.35	09043	87.10
2400 - 2499	08994	69.75	09019	79.45	09044	89.00
2500 - 2599	08995	71.40	09020	81.60	09045	91.55
2600 - 2699	08996	73.25	09021	83.50	09046	94.05
2700 - 2799	08997	74.95	09022	85.70	09047	96.05
2800 - 2899	08998	76.10	09023	87.55	09048	97.75
2900 - 2999	08999	78.30	09024	89.00	09049	99.45
	Largeur = 35		Largeur = 40		Largeur = 45	
800 - 899	09053	53.15	09078	58.75	09103	64.90
900 - 999	09054	57.40	09079	62.75	09104	68.35
1000 - 1099	09055	60.05	09080	65.45	09105	71.45
1100 - 1199	09056	62.75	09081	69.75	09106	75.70
1200 - 1299	09057	65.45	09082	72.55	09107	79.45
1300 - 1399	09058	68.75	09083	74.85	09108	82.45
1400 - 1499	09059	71.40	09084	78.65	09109	85.95
1500 - 1599	09060	74.55	09085	81.60	09110	89.00
1600 - 1699	09061	77.75	09086	83.45	09111	92.70
1700 - 1799	09062	79.95	09087	87.30	09112	96.20
1800 - 1899	09063	82.45	09088	90.90	09113	99.10
1900 - 1999	09064	85.60	09089	94.05	09114	102.25
2000 - 2099	09065	88.40	09090	97.75	09115	106.05
2100 - 2199	09066	90.90	09091	100.20	09116	109.40
2200 - 2299	09067	94.05	09092	103.40	09117	112.50
2300 - 2399	09068	96.20	09093	105.10	09118	115.65
2400 - 2499	09069	99.10	09094	108.20	09119	118.10
2500 - 2599	09070	101.55	09095	111.45	09120	122.05
2600 - 2699	09071	104.05	09096	114.70	09121	124.30
2700 - 2799	09072	105.80	09097	117.00	09122	127.40
2800 - 2899	09073	108.00	09098	119.50	09123	129.80
2900 - 2999	09074	110.20	09099	121.80	09124	132.75



# Schurch Asco SA



*Partenaire et Savoir-faire*

AV. DU 1ER MARS 33, CP 3052  
CH-2001 NEUCHÂTEL  
SWITZERLAND

PHONE : +41 32 724 3434

FAX : +41 32 724 3436

EMAIL : [INFO@SCHURCH-ASCO.COM](mailto:INFO@SCHURCH-ASCO.COM)

WEB : [WWW.SCHURCH-ASCO.COM](http://WWW.SCHURCH-ASCO.COM)



*Flat endless Belt*

*synthetic, blue,*

*thickness 2 mm*

**POWERBAND HIGH CAPACITY**

Length	Width = 50		Width = 60		Width = 70	
	Ref.	PRICE	Ref.	PRICE	Ref.	PRICE
800 - 899	<b>09128</b>	70.40	<b>09153</b>	81.95	<b>09178</b>	93.55
900 - 999	<b>09129</b>	75.00	<b>09154</b>	87.40	<b>09179</b>	99.40
1000 - 1099	<b>09130</b>	78.40	<b>09155</b>	91.75	<b>09180</b>	104.70
1100 - 1199	<b>09131</b>	82.45	<b>09156</b>	96.75	<b>09181</b>	109.80
1200 - 1299	<b>09132</b>	86.45	<b>09157</b>	100.45	<b>09182</b>	114.60
1300 - 1399	<b>09133</b>	90.00	<b>09158</b>	105.45	<b>09183</b>	119.80
1400 - 1499	<b>09134</b>	94.05	<b>09159</b>	108.75	<b>09184</b>	125.05
1500 - 1599	<b>09135</b>	98.20	<b>09160</b>	113.60	<b>09185</b>	129.65
1600 - 1699	<b>09136</b>	101.15	<b>09161</b>	118.55	<b>09186</b>	135.10
1700 - 1799	<b>09137</b>	104.95	<b>09162</b>	122.65	<b>09187</b>	139.70
1800 - 1899	<b>09138</b>	109.00	<b>09163</b>	126.75	<b>09188</b>	144.40
1900 - 1999	<b>09139</b>	111.85	<b>09164</b>	130.20	<b>09189</b>	148.65
2000 - 2099	<b>09140</b>	115.75	<b>09165</b>	135.10	<b>09190</b>	153.15
2100 - 2199	<b>09141</b>	119.25	<b>09166</b>	138.25	<b>09191</b>	158.95
2200 - 2299	<b>09142</b>	123.15	<b>09167</b>	143.20	<b>09192</b>	163.40
2300 - 2399	<b>09143</b>	126.30	<b>09168</b>	146.40	<b>09193</b>	167.35
2400 - 2499	<b>09144</b>	129.55	<b>09169</b>	149.90	<b>09194</b>	171.00
2500 - 2599	<b>09145</b>	132.40	<b>09170</b>	153.55	<b>09195</b>	174.45
2600 - 2699	<b>09146</b>	135.75	<b>09171</b>	156.95	<b>09196</b>	178.55
2700 - 2799	<b>09147</b>	138.25	<b>09172</b>	160.50	<b>09197</b>	182.35
2800 - 2899	<b>09148</b>	141.35	<b>09173</b>	163.55	<b>09198</b>	186.10
2900 - 2999	<b>09149</b>	144.65	<b>09174</b>	166.90	<b>09199</b>	216.40
	Largeur = 80		Largeur = 90		Largeur = 100	
800 - 899	<b>09203</b>	105.60	<b>09228</b>	117.80	<b>09253</b>	129.25
900 - 999	<b>09204</b>	112.10	<b>09229</b>	123.85	<b>09254</b>	136.50
1000 - 1099	<b>09205</b>	119.25	<b>09230</b>	131.25	<b>09255</b>	144.20
1100 - 1199	<b>09206</b>	123.70	<b>09231</b>	137.70	<b>09256</b>	151.50
1200 - 1299	<b>09207</b>	129.25	<b>09232</b>	144.30	<b>09257</b>	158.00
1300 - 1399	<b>09208</b>	134.85	<b>09233</b>	150.75	<b>09258</b>	165.25
1400 - 1499	<b>09209</b>	140.35	<b>09234</b>	157.20	<b>09259</b>	171.40
1500 - 1599	<b>09210</b>	145.90	<b>09235</b>	162.80	<b>09260</b>	178.35
1600 - 1699	<b>09211</b>	151.75	<b>09236</b>	169.20	<b>09261</b>	184.85
1700 - 1799	<b>09212</b>	157.20	<b>09237</b>	175.40	<b>09262</b>	192.45
1800 - 1899	<b>09213</b>	162.00	<b>09238</b>	181.25	<b>09263</b>	198.90
1900 - 1999	<b>09214</b>	167.35	<b>09239</b>	186.90	<b>09264</b>	204.60
2000 - 2099	<b>09215</b>	173.00	<b>09240</b>	193.15	<b>09265</b>	211.60
2100 - 2199	<b>09216</b>	178.95	<b>09241</b>	198.95	<b>09266</b>	218.10
2200 - 2299	<b>09217</b>	184.15	<b>09242</b>	205.10	<b>09267</b>	224.20
2300 - 2399	<b>09218</b>	188.55	<b>09243</b>	210.50	<b>09268</b>	229.65
2400 - 2499	<b>09219</b>	193.05	<b>09244</b>	215.15	<b>09269</b>	234.70
2500 - 2599	<b>09220</b>	197.60	<b>09245</b>	220.50	<b>09270</b>	239.75
2600 - 2699	<b>09221</b>	201.60	<b>09246</b>	225.85	<b>09271</b>	244.85
2700 - 2799	<b>09222</b>	206.15	<b>09247</b>	230.80	<b>09272</b>	250.20
2800 - 2899	<b>09223</b>	210.90	<b>09248</b>	235.80	<b>09273</b>	254.95
2900 - 2999	<b>09224</b>	215.30	<b>09249</b>	240.85	<b>09274</b>	260.25



## Flat endless Belt

### High capacity, synthetic

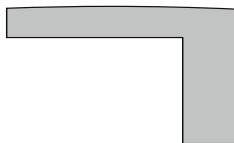
Made in cloth, endless, the HEVALOID belts, made of synthetic thread in different thickness, are soaked in synthetic rubber and then vulcanized. The result is a silent belt that has a great flexibility and a high friction coefficient. Its 90% output, with a high deflexion frequency, allows power economy, consideration of the bearings and an exceptional use lasting. These transfer belts are resistant to oil, acids and lye. They endure permanent temperatures of 100°C. In order to get good results, the pulleys should not have rims. A uniform surface, well worked, assures the best transit of the belt. In all transmission with flat belts, at least one of the pulleys must be bulging in order to assure an efficient guidance.

## HEVALOID

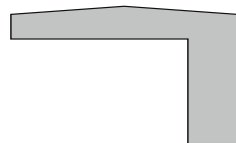


### Conditions of sale: Net prices

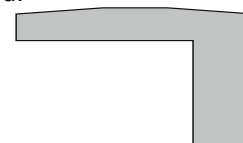
Correct shape that assures an efficient guidance and a long time of use.



Acceptable for a width inferior to 20 mm.



Bad shape, to be absolutely avoided.



The belt thickness, the price of which is indicated in red (525), is 1.5 mm and that of the others (535) is 2 mm.

Length	Width = 5		Width = 10		Width = 15	
	Ref.	PRICE	Ref.	PRICE	Ref.	PRICE
500 - 599	07600	15,50	07625	20,10	07650	24,60
600 - 699	07601	16,55	07626	21,65	07651	24,65
700 - 799	07602	17,55	07627	23,05	07652	27,50
800 - 899	07603	19,15	07628	25,00	07653	39,15
900 - 999	07604	19,75	07629	26,10	07654	41,15
1000 - 1099	07605	21,25	07630	27,50	07655	43,25
1100 - 1199	07606	22,00	07631	29,25	07656	45,60
1200 - 1299	07607	23,05	07632	30,55	07657	47,95
1300 - 1399	07608	24,60	07633	31,80	07658	50,00
1400 - 1499	07609	25,45	07634	33,00	07659	52,30
1500 - 1599	07610	26,50	07635	34,70	07660	54,30
1600 - 1699	07611	27,35	07636	36,35	07661	56,45
1700 - 1799	07612	28,50	07637	37,70	07662	58,20
1800 - 1899	07613	30,40	07638	38,55	07663	60,50
1900 - 1999	07614	31,35	07639	40,75	07664	62,10
2000 - 2099	07615	32,05	07640	41,50	07665	63,75
2100 - 2199	07616	33,10	07641	42,70	07666	66,20
2200 - 2299	07617	34,35	07642	43,60	07667	67,90
2300 - 2399	07618	35,65	07643	45,05	07668	69,75
2400 - 2499	07619	36,35	07644	46,65	07669	71,90
2500 - 2599	07620	37,45	07645	47,95	07670	72,90
2600 - 2699	07621	38,45	07646	49,25	07671	76,10
2700 - 2799	07622	39,60	07647	50,95	07672	77,65
2800 - 2899	07623	40,90	07648	52,10	07673	79,35
2900 - 2999	07624	41,75	07649	53,35	07674	81,80





# Schurch Asco SA



*Partenaire et Savoir-faire*

AV. DU 1ER MARS 33, CP 3052  
CH-2001 NEUCHÂTEL  
SWITZERLAND

PHONE : +41 32 724 3434

FAX : +41 32 724 3436

EMAIL : [INFO@SCHURCH-ASCO.COM](mailto:INFO@SCHURCH-ASCO.COM)

WEB : [WWW.SCHURCH-ASCO.COM](http://WWW.SCHURCH-ASCO.COM)

## HEVALOID

## Flat endless Belts, synthetic

The belt thickness, the price of which is indicated in red (525), is 1.5 mm and that of the others (535) is 2 mm

Length	Width = 20		Width = 25		Width = 30	
	Ref.	PRICE	Ref.	PRICE	Ref.	PRICE
500 - 599	07675	27,50	07700	31,90	07725	36,25
600 - 699	07676	30,10	07701	34,70	07726	38,90
700 - 799	07677	32,70	07702	36,85	07727	41,60
800 - 899	07678	45,60	07703	51,40	07728	58,20
900 - 999	07679	47,95	07704	54,85	07729	60,10
1000 - 1099	07680	49,90	07705	57,45	07730	64,85
1100 - 1199	07681	53,25	07706	61,30	07731	67,90
1200 - 1299	07682	55,65	07707	63,75	07732	71,00
1300 - 1399	07683	58,20	07708	67,00	07733	74,55
1400 - 1499	07684	60,50	07709	69,50	07734	77,35
1500 - 1599	07685	63,15	07710	71,90	07735	80,35
1600 - 1699	07686	64,70	07711	75,15	07736	83,35
1700 - 1799	07687	67,15	07712	77,65	07737	86,55
1800 - 1899	07688	69,75	07713	79,95	07738	89,50
1900 - 1999	07689	71,85	07714	82,25	07739	92,25
2000 - 2099	07690	75,15	07715	85,70	07740	96,20
2100 - 2199	07691	76,55	07716	87,65	07741	98,45
2200 - 2299	07692	78,40	07717	89,70	07742	101,70
2300 - 2399	07693	81,80	07718	92,60	07743	104,25
2400 - 2499	07694	83,35	07719	95,25	07744	106,85
2500 - 2599	07695	85,70	07720	97,80	07745	109,80
2600 - 2699	07696	87,65	07721	100,10	07746	112,50
2700 - 2799	07697	89,65	07722	102,80	07747	114,95
2800 - 2899	07698	91,10	07723	104,85	07748	117,25
2900 - 2999	07699	92,95	07724	106,85	07749	119,00
	Largeur = 35		Largeur = 40		Largeur = 45	
500 - 599	07750	39,60	07775	43,35	07800	47,15
600 - 699	07751	42,80	07776	46,95	07801	51,40
700 - 799	07752	45,95	07777	50,95	07802	55,45
800 - 899	07753	63,75	07778	70,40	07803	77,65
900 - 999	07754	68,55	07779	75,15	07804	81,80
1000 - 1099	07755	71,85	07780	78,40	07805	85,70
1100 - 1199	07756	75,15	07781	83,35	07806	90,70
1200 - 1299	07757	78,40	07782	86,90	07807	95,25
1300 - 1399	07758	82,25	07783	89,65	07808	98,45
1400 - 1499	07759	85,35	07784	94,15	07809	102,95
1500 - 1599	07760	89,50	07785	97,80	07810	106,80
1600 - 1699	07761	92,95	07786	100,10	07811	110,90
1700 - 1799	07762	95,75	07787	104,70	07812	115,25
1800 - 1899	07763	98,45	07788	108,90	07813	118,55
1900 - 1999	07764	102,40	07789	112,50	07814	122,25
2000 - 2099	07765	105,90	07790	116,70	07815	126,90
2100 - 2199	07766	108,90	07791	120,00	07816	130,90
2200 - 2299	07767	112,25	07792	123,85	07817	134,65
2300 - 2399	07768	115,25	07793	126,05	07818	138,30
2400 - 2499	07769	118,55	07794	129,65	07819	141,50
2500 - 2599	07770	121,85	07795	133,45	07820	146,10
2600 - 2699	07771	124,65	07796	137,45	07821	149,05
2700 - 2799	07772	126,75	07797	140,05	07822	151,50
2800 - 2899	07773	129,55	07798	143,05	07823	155,40
2900 - 2999	07774	132,10	07799	145,90	07824	159,20



## Flat endless Belts, synthetic

## HEVALOID

The belt thickness, the price of which is indicated in red (525), is 1.5 mm and that of the others (535) is 2 mm.

Length	Width = 50		Width = 60		Width = 70	
	Ref.	PRICE	Ref.	PRICE	Ref.	PRICE
500 - 599	07825	52,00	07850	59,55	07875	68,35
600 - 699	07826	55,95	07851	64,90	07876	74,55
700 - 799	07827	60,25	07852	70,10	07877	79,95
800 - 899	07828	84,10	07853	98,05	07878	112,25
900 - 999	07829	89,80	07854	104,35	07879	118,55
1000 - 1099	07830	93,90	07855	109,95	07880	125,15
1100 - 1199	07831	98,65	07856	116,20	07881	131,50
1200 - 1299	07832	103,45	07857	121,60	07882	137,30
1300 - 1399	07833	107,75	07858	126,20	07883	143,45
1400 - 1499	07834	112,50	07859	130,40	07884	149,80
1500 - 1599	07835	117,45	07860	135,95	07885	155,30
1600 - 1699	07836	121,20	07861	142,05	07886	163,00
1700 - 1799	07837	125,75	07862	146,80	07887	193,30
1800 - 1899	07838	130,45	07863	151,75	07888	172,95
1900 - 1999	07839	133,85	07864	156,10	07889	178,25
2000 - 2099	07840	138,70	07865	161,80	07890	183,40
2100 - 2199	07841	142,50	07866	165,90	07891	190,45
2200 - 2299	07842	147,65	07867	171,40	07892	195,70
2300 - 2399	07843	151,40	07868	175,60	07893	200,35
2400 - 2499	07844	154,85	07869	179,60	07894	204,85
2500 - 2599	07845	158,60	07870	184,15	07895	209,60
2600 - 2699	07846	162,45	07871	188,05	07896	213,95
2700 - 2799	07847	165,85	07872	192,15	07897	218,55
2800 - 2899	07848	169,10	07873	195,80	07898	223,10
2900 - 2999	07849	173,25	07874	200,10	07899	227,65
	Largeur = 80		Largeur = 90		Largeur = 100	
500 - 599	07900	77,55	07925	86,80	07950	94,65
600 - 699	07901	83,70	07926	93,45	07951	102,95
700 - 799	07902	90,15	07927	100,25	07952	110,25
800 - 899	07903	126,60	07928	141,20	07953	154,55
900 - 999	07904	134,40	07929	148,55	07954	161,80
1000 - 1099	07905	142,90	07930	157,35	07955	172,60
1100 - 1199	07906	148,10	07931	164,90	07956	181,60
1200 - 1299	07907	154,85	07932	172,60	07957	189,45
1300 - 1399	07908	161,35	07933	180,40	07958	197,80
1400 - 1499	07909	168,80	07934	188,15	07959	205,35
1500 - 1599	07910	174,65	07935	194,90	07960	213,60
1600 - 1699	07911	181,60	07936	202,45	07961	221,50
1700 - 1799	07912	188,30	07937	210,20	07962	230,45
1800 - 1899	07913	193,90	07938	217,10	07963	238,30
1900 - 1999	07914	200,55	07939	223,95	07964	245,10
2000 - 2099	07915	207,05	07940	231,65	07965	253,40
2100 - 2199	07916	214,30	07941	238,30	07966	261,10
2200 - 2299	07917	220,65	07942	245,65	07967	268,70
2300 - 2399	07918	225,95	07943	252,25	07968	275,20
2400 - 2499	07919	231,20	07944	257,85	07969	281,20
2500 - 2599	07920	236,40	07945	264,10	07970	287,15
2600 - 2699	07921	241,85	07946	270,55	07971	293,50
2700 - 2799	07922	247,10	07947	276,45	07972	299,65
2800 - 2899	07923	252,65	07948	282,55	07973	305,50
2900 - 2999	07924	259,20	07949	288,95	07974	311,85



## Assembling Plier

### DIXLINK

Pliers for the dismantling and assembling of trapezoidal link belts.

VEELOS or MAXI belts



Ref.	Designation	Price
01735	DIXLINK Pliers	17.00

Conditions of sale: Net prices.

## Vulcanization Plier

### VULCOPLAST

Electrical vulcanization Plier for the round belts including a knife and the transformer. Pipe plays must be ordered separately.



Ref.	Designation	Price
16740	Plier	724.00
16770	Pipe play Ø 3	48.00
16741	Pipe play Ø 4	48.00
16742	Pipe play Ø 5	48.00
16743	Pipe play Ø 6	48.00
16744	Pipe play Ø 7	48.00
16745	Pipe play Ø 8	48.00
16746	Pipe play Ø 9	48.00
16747	Pipe play Ø 10	48.00
16748	Pipe play Ø 11	48.00
16749	Pipe play Ø 12	48.00



Conditions of sale: Net prices.

## Cutting Plier

Guillotine Plier for clear and regular cutting of round belts.



Ref.	Designation	Price
01770	Plier	24.00

Conditions of sale: 10 % from 10 pliers.

156 Belts

March 2024